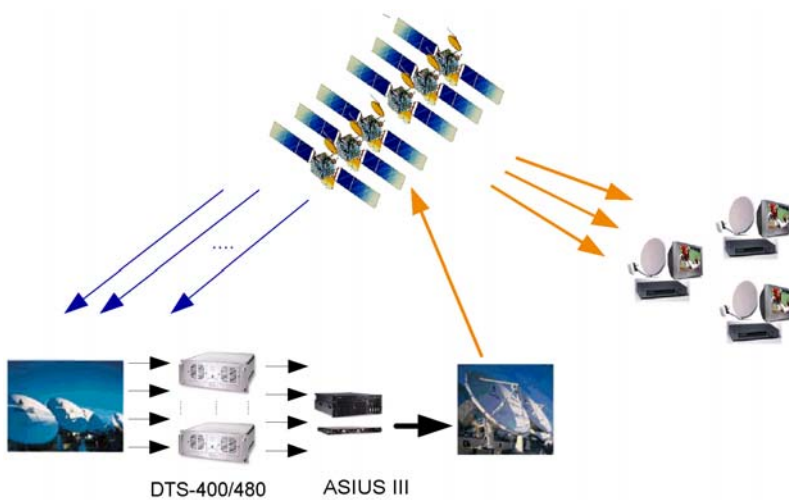


Broadcast Operations – Product Family

ASTRA Service Information Update System (ASIUS III)



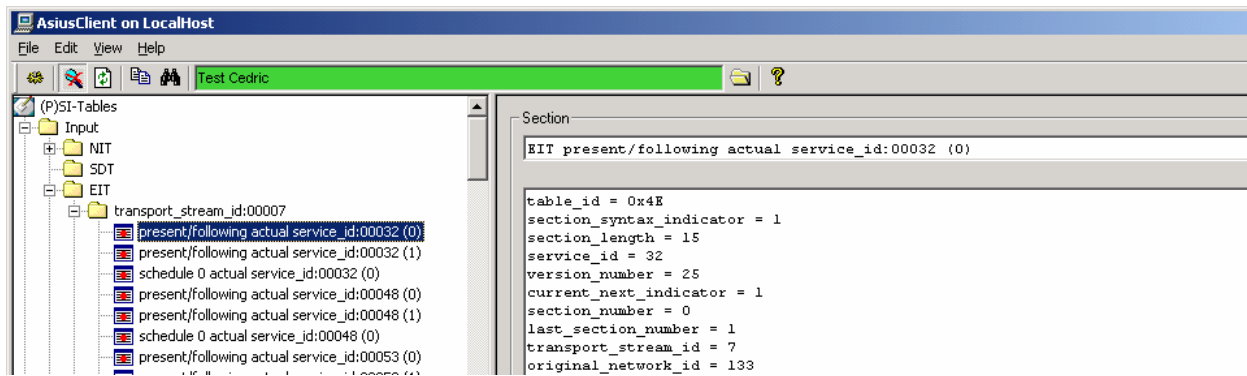
Global EPG

ASIUS III V1.2.0

- ▲ Collecting & compiling DVB-SI information from multiple sources
- ▲ Creating a service / event description of the complete DVB network
- ▲ Backbone for a global Electronic Program Guide (EPG)
- ▲ Generating & editing of the Network Information Table (NIT)
- ▲ Generating & editing of Service Description Tables (SDT)

ASIUS III V1.2.0 Features

▲ View input and output NIT, SDT and EIT (P)SI tables in real time, displayed in human-readable form

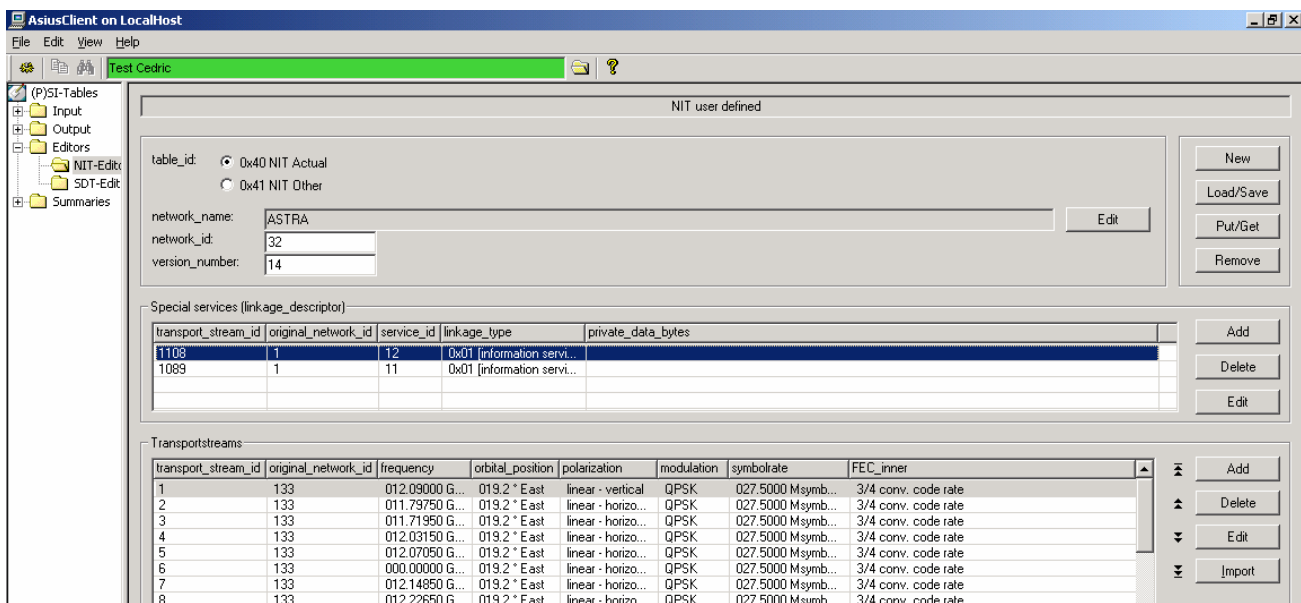


ASIUS III is a client/server application that takes as input MPEG-2/DVB (P)SI tables from transport streams in the network and stores them in a dedicated area of memory called the Input Storage.

From the Input Storage any SDT Actual and EIT Actual tables are collated to form global SDT Other and global EIT Other tables in another dedicated area of memory called the Output Storage. Any tables in the Output storage are sent in real time to the so-called Output Stage Device for encoding and then multiplexing and uplinking on two special Channels called the Reference Channels, one with horizontal polarity and one vertical.

Customers of the network who do their own uplinking from a different site can then receive the global NIT from a Reference Channel and include it in real time in their own transport streams. Alternatively, the Set-Top Boxes can tune to the Reference Channel to collect this information. Further, with suitable STBs and software, the global EITs and SDTs can be used to create an Electronic Program Guide (EPG) for the whole of the satellite network.

▲ Create, edit and delete Network Information Tables (NITs) and Service Description Tables (SDTs)



▲ Maintenance free

- No "disk full" or "out of memory" exceptions
 - LOG file size is adjusted by the user (default: 15 MB)
 - No growing number or size of files
 - Constant memory usage
 - No database
- All the configuration is persistent inside the NT Registry and reloaded automatically after a startup

